

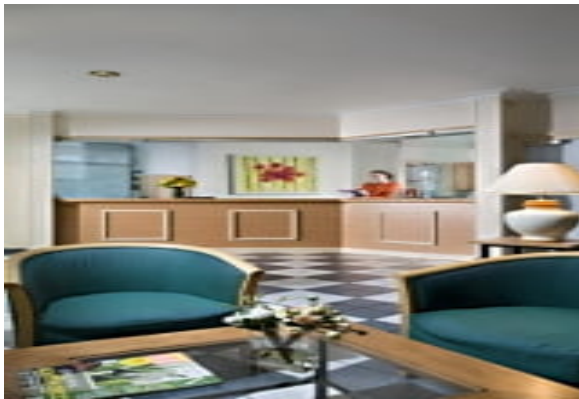
LIVING™

BY BRIDGESTREET

CITADINES - MONTPARNASSE PARIS

67, AVENUE DU MAINE · PARIS, 75014 FRANCE

Located right in the heart of Montparnasse, the celebrated artists' quarter of the 1920s, the Citadines Apart'hotel here sits amongst stylish cafés, theatres and cinemas. This is a district teeming with shopping centres, boutiques and restaurants offering sumptuous international cuisine. It is also conveniently located – it is a mere 2-minute walk from the station and is halfway between Necker and Saint-Vincent-de-Paul hospitals. The Pasteur Institute, government offices and Senate building are all close by. All this at your door step, and just a few minutes away are the Luxembourg gardens, the Saint-Germain-des-Prés area and the Latin Quarter. Absolute musts: the sculpture collections and romantic gardens at the Musée Bourdelle



AT THIS LOCATION

IN THE APARTMENT

SERVICES

- Baby Equipment Available
- Breakfast Service
- Internet Access

BRIDGESTREET
GLOBAL HOSPITALITY

+33 (1) 42 94 13 13
BRIDGESTREET.COM

EXCLUSIVE.
BY BRIDGESTREET

RESIDENCES.
BY BRIDGESTREET

MODE.
A PART HOTEL

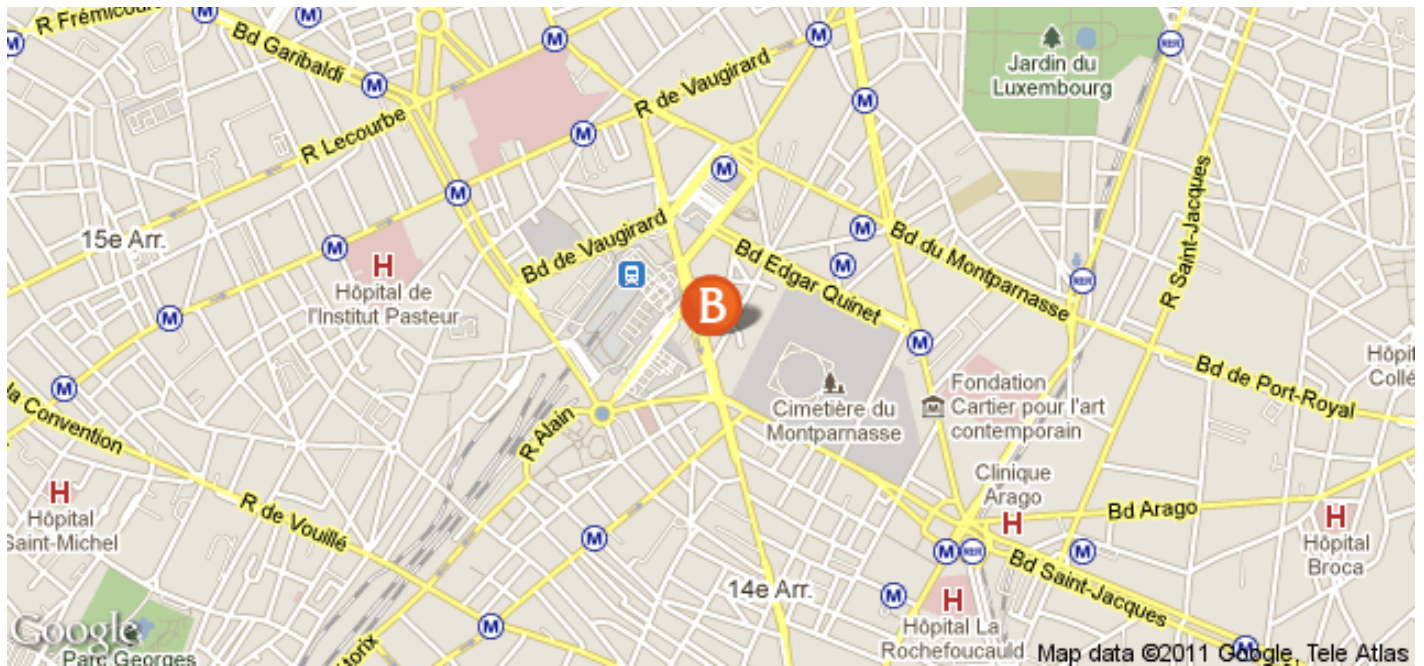
LIVING.
BY BRIDGESTREET

PLACES.
BY BRIDGESTREET

STÜDYO.
BY BRIDGESTREET

LIVING™

BY BRIDGESTREET



IN THE AREA

- Airport : Orly (30 mn), Roissy CDG (45 mn, shuttle in 5 mn from the Apart' hotel).
- Underground and RER : lines 4, 6, 12 (station Montparnasse-Bienvenue) and 13 (Gaité).

CITADINES - MONTPARNASSE PARIS

67, AVENUE DU MAINE · PARIS, 75014 FRANCE

Call us: +33 (1) 42 94 13 13

Distance from city center: 1.5 mile(s)

BRIDGESTREET.
GLOBAL HOSPITALITY

+33 (1) 42 94 13 13
BRIDGESTREET.COM

EXCLUSIVE.
BY BRIDGESTREET

RESIDENCES.
BY BRIDGESTREET

MODE.
APARTHOTEL

LIVING.
BY BRIDGESTREET

PLACES.
BY BRIDGESTREET

STÜDYO.
BY BRIDGESTREET