

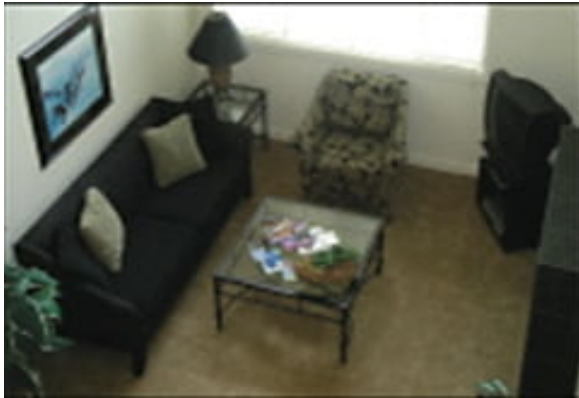
LIVING™

BY BRIDGESTREET

NEWELL COURT

3011 78TH AVENUE SE · MERCER ISLAND, WA 98040
UNITED STATES

Just a ten minute commute to Downtown Seattle and Bellevue just off Interstate 90. Walk to ethnic restaurants, specialty shops, and over 475 acres of parklands and open spaces. The excellent schools, stress-free commute and the beauty of island living makes this one of the most desirable places to live.



AT THIS LOCATION

- Conference Room
- Controlled Access
- Elevators Present
- Extra storage available
- Parking Garage

IN THE APARTMENT

SERVICES

- Basic Cable Television Service Provided
- Bi-Weekly Housekeeping
- Customized Billing to Suit Your Company's Needs
- Guest Handbook with a guide to the city and local community. Find everything from the area tourist sights, the nearest drug store, to the fitness center hours.
- Key Packet Delivered Prior to Move-In
- Our Satisfaction Guarantee / notre garantie satisfaction

BRIDGESTREET.
GLOBAL HOSPITALITY

1 800 278 7338
BRIDGESTREET.COM

EXCLUSIVE.
BY BRIDGESTREET

RESIDENCES.
BY BRIDGESTREET

MODE.
A PART HOTEL

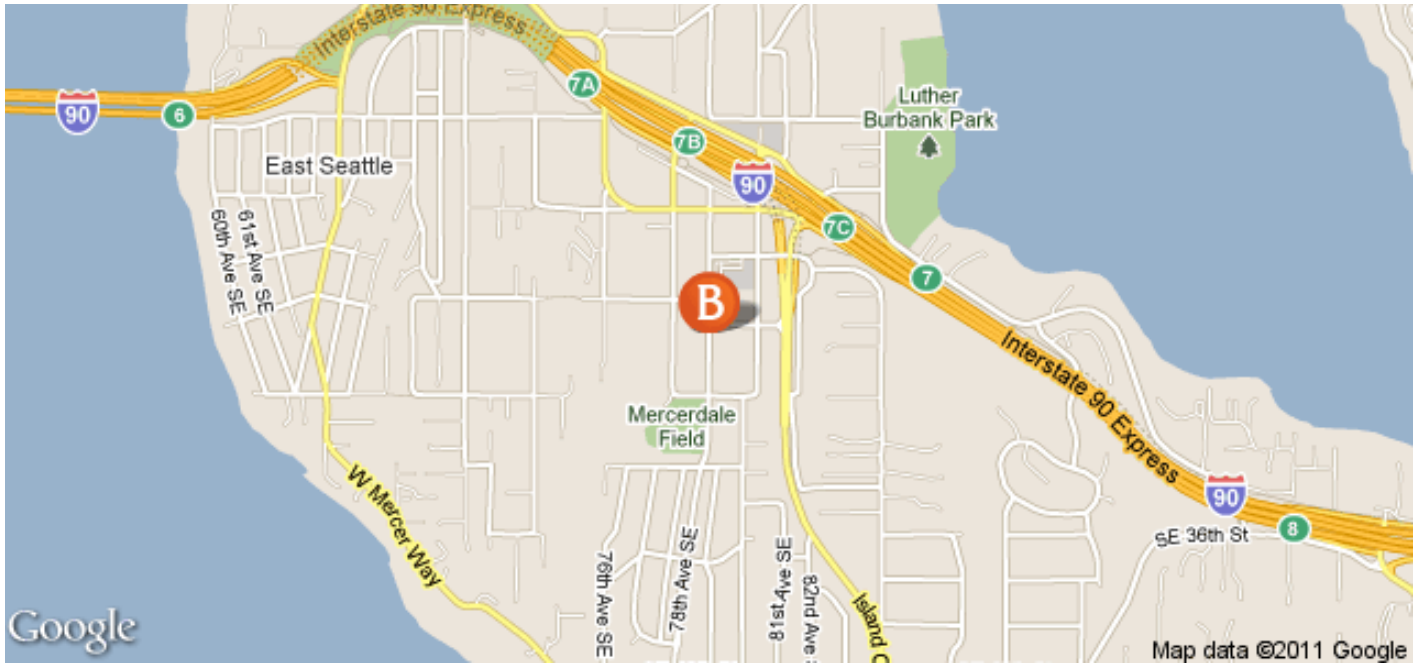
LIVING.
BY BRIDGESTREET

PLACES.
BY BRIDGESTREET

STÜDYO.
BY BRIDGESTREET

LIVING™

BY BRIDGESTREET



IN THE AREA

NEWELL COURT

3011 78TH AVENUE SE · MERCER ISLAND, WA 98040
UNITED STATES

Call us: 1 800 278 7338

Distance from city center: 1.2 mile(s)

BRIDGESTREET.
GLOBAL HOSPITALITY

1 800 278 7338
BRIDGESTREET.COM

EXCLUSIVE.
BY BRIDGESTREET

RESIDENCES.
BY BRIDGESTREET

MODE.
APARTHOTEL

LIVING.
BY BRIDGESTREET

PLACES.
BY BRIDGESTREET

STÜDYO.
BY BRIDGESTREET