

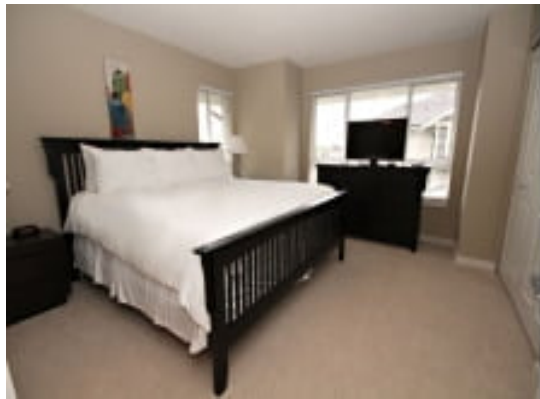
# LIVING™

BY BRIDGESTREET

## ARISTA

65-2955 156TH ST · SURREY, BC V3S 0C7 CANADA

Enjoy living in the stylish townhome development at Arista located at the northwest corner of 156th Street and Mountain View Drive in South Surrey. This spacious 1430 sq. ft. three level townhome is surrounded by beautifully landscaped green spaces. Expansive windows with bright interiors and a modern floor plan lend a unique appeal inviting you to make this your home



### AT THIS LOCATION

- Adjacent to Golf Course
- Beaches just a short distance away
- Walking/Jogging Trail

### IN THE APARTMENT

- Granite countertops
- Laundry Facilities
- Stainless steel kitchens

### SERVICES

- Basic Cable Television Service Provided
- Bi-Weekly Housekeeping
- Customized Billing to Suit Your Company's Needs
- Guest Handbook with a guide to the city and local community. Find everything from the area tourist sights, the nearest drug store, to the fitness center hours.
- Key Packet Delivered Prior To Move-In
- Our Satisfaction Guarantee / notre garantie satisfaction

**BRIDGESTREET**  
GLOBAL HOSPITALITY

1 800 278 7338  
BRIDGESTREET.COM

EXCLUSIVE.  
BY BRIDGESTREET

RESIDENCES.  
BY BRIDGESTREET

MODEL  
A PART HOTEL

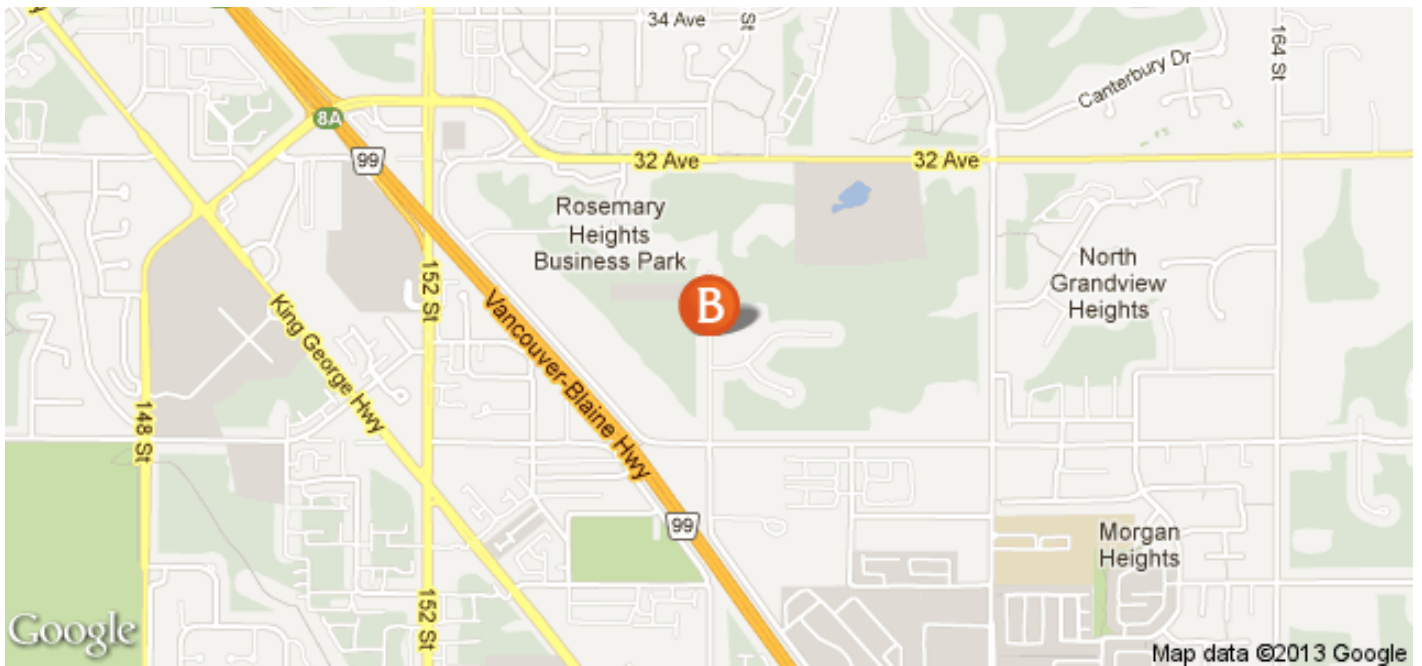
LIVING.  
BY BRIDGESTREET

PLACES.  
BY BRIDGESTREET

STÜDYO.  
BY BRIDGESTREET

# LIVING™

BY BRIDGESTREET



## IN THE AREA

- Morgan Heights Neighborhood
- South Surrey

## ARISTA

65-2955 156TH ST · SURREY, BC V3S 0C7 CANADA

Call us: 1 800 278 7338

Distance from city center: 3.8 mile(s)

**BRIDGESTREET.**  
GLOBAL HOSPITALITY

1 800 278 7338  
BRIDGESTREET.COM

EXCLUSIVE.  
BY BRIDGESTREET

RESIDENCES.  
BY BRIDGESTREET

MODE.  
APARTHOTEL

LIVING.  
BY BRIDGESTREET

PLACES.  
BY BRIDGESTREET

STÜDYO.  
BY BRIDGESTREET