

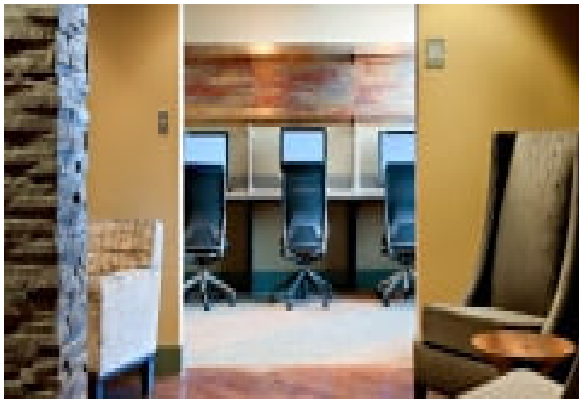
# LIVING™

BY BRIDGESTREET

## MCHENRY ROW

1630 WHETSTONE WAY SUITE 400 · BALTIMORE, MD  
21230 UNITED STATES

Located in the historic Baltimore neighborhood of Locust Point, McHenry Row offers an urban living environment for those seeking a new, spacious apartment close to downtown and seconds from I-95. Apartments feature 9 foot ceilings, generous sized rooms and closets, fully equipped kitchens, and much more. With the shops at McHenry Row, concerts at Pier Six Pavilion, and a stretch of dining options in nearby Federal Hill, you'll never be short of places to visit.



### AT THIS LOCATION

- 24 Hr Front Desk
- Billiards Room
- Business Center
- Controlled Access
- Elevators Present
- Fitness Center/Gym in Proximity
- Lounge
- Movie/Cinema Room

### IN THE APARTMENT

- Air Conditioning / Heating
- Apartments feature granite kitchens
- Balcony (Selected Apartments)
- Basic Cable Television
- Ceiling Fans
- Designer Furniture Packages
- Dishwasher / lave vaisselle
- LCD or Plasma Television

### SERVICES

- Bi-Weekly Housekeeping Services (Daily Towel Service)
- Key Packet Delivered Prior to Move-In

**BRIDGESTREET**  
GLOBAL HOSPITALITY

1 410 296 0900  
BRIDGESTREET.COM

EXCLUSIVE.  
BY BRIDGESTREET

RESIDENCES.  
BY BRIDGESTREET

MODEL  
A PART HOTEL

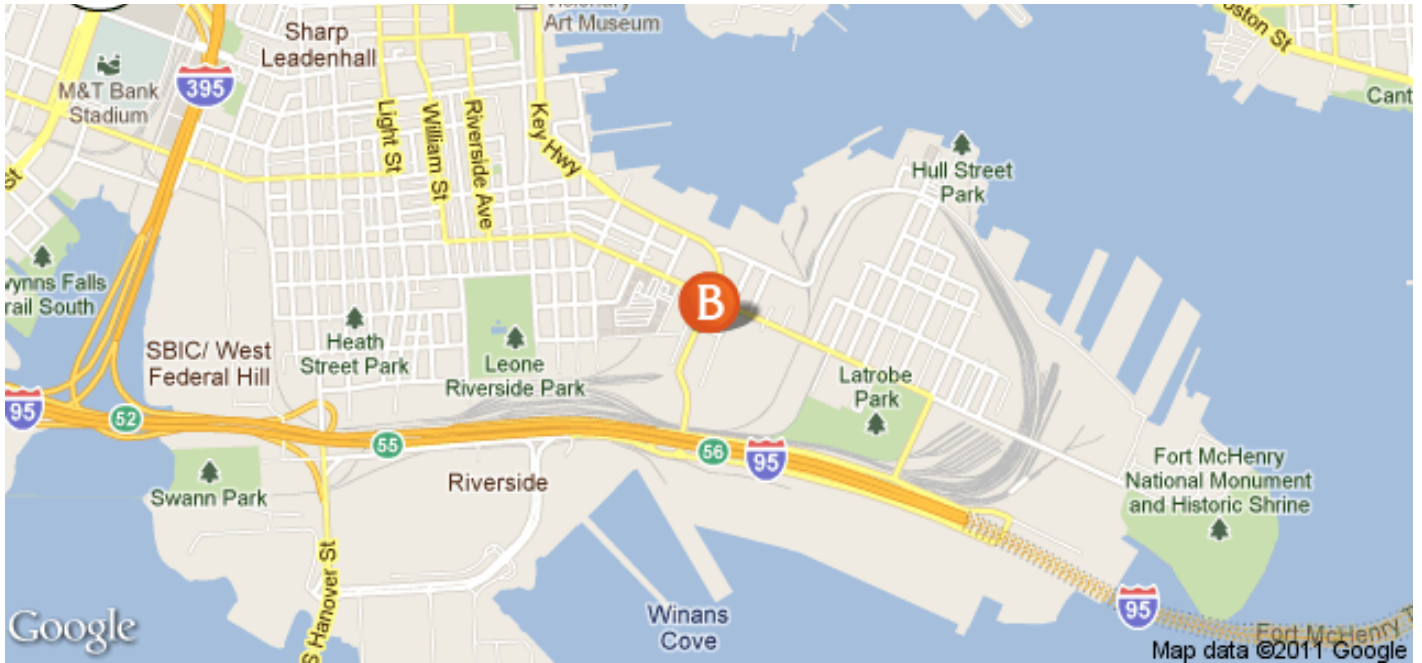
LIVING.  
BY BRIDGESTREET

PLACES.  
BY BRIDGESTREET

STÜDYO.  
BY BRIDGESTREET

# LIVING™

BY BRIDGESTREET



## IN THE AREA

- Easy Access to I-95
- Harris Teeter Grocery store on site
- Minutes to Inner Harbor Attractions
- 10 miles to BWI airport
- Numerous shops and dining on site

## MCHENRY ROW

1630 WHETSTONE WAY SUITE 400 · BALTIMORE, MD  
21230 UNITED STATES

Call us: 1 410 296 0900

Distance from city center: 1.6 mile(s)

**BRIDGESTREET.**  
GLOBAL HOSPITALITY

1 410 296 0900  
BRIDGESTREET.COM

EXCLUSIVE.  
BY BRIDGESTREET

RESIDENCES.  
BY BRIDGESTREET

MODE.  
A PARTHOTEL

LIVING.  
BY BRIDGESTREET

PLACES.  
BY BRIDGESTREET

STÜDYO.  
BY BRIDGESTREET